

Breast Cancer Statistical Backgrounder

For Breast Cancer Awareness Month Proclamation

Breast Cancer is a widespread problem.

Breast cancer strikes one in every eight women. In 2003 alone, an estimated 211,000 U.S. women will be diagnosed with breast cancer and nearly 40,000 will die from the disease. In Washington State, 3,800 will be diagnosed and 700 will die.

Source: *Cancer Facts and Figures, 2003, American Cancer Society, 2003, Pages 4, 5 and 6.*

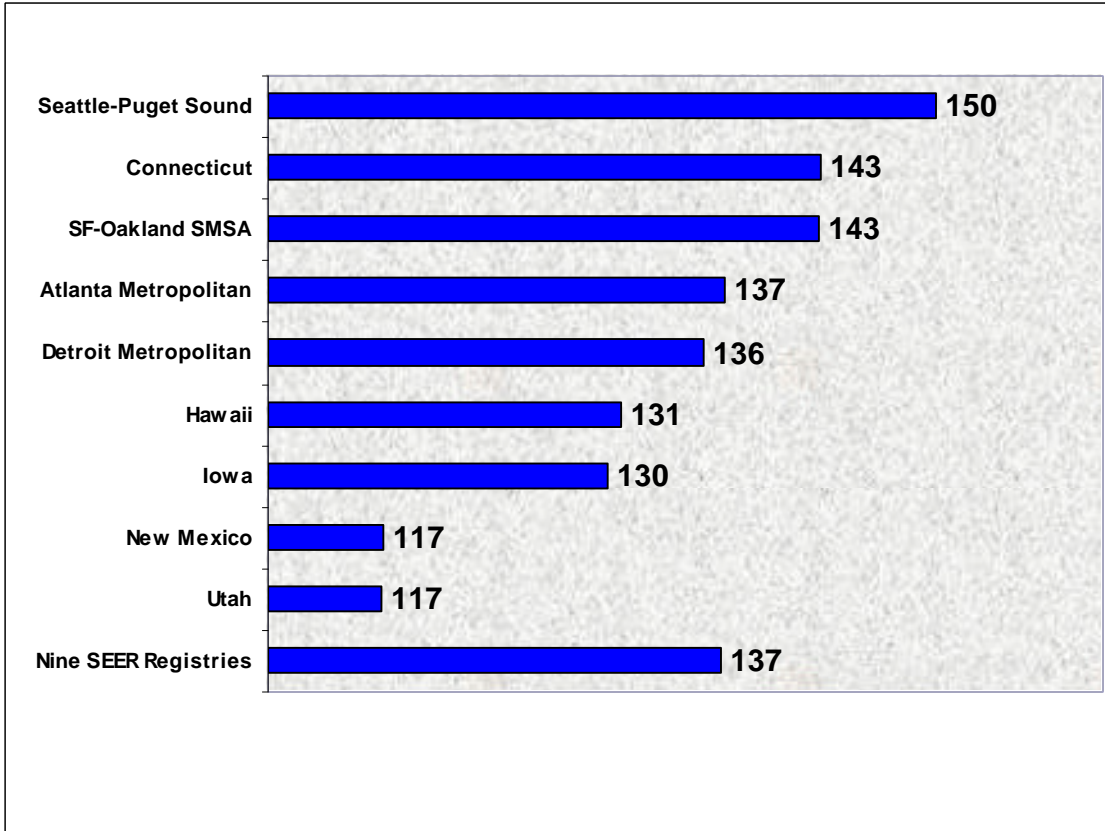
Washington State has the Nation's Highest Incidence of Breast Cancer

(Incidence Rate per 100,000, 1996-2000)

Washington	145.2	Wisconsin	131.8	North Carolina	122.0
Oregon	143.4	New York	131.2	Louisiana	121.6
Massachusetts	143.3	Florida	131.1	Arizona	120.9
Connecticut	143.1	Hawaii	131.1	West Virginia	119.8
District of Columbia	142.9	Pennsylvania	130.6	Texas *	118.6
Delaware*	140.0	Iowa	130.4	New Mexico	116.9
Alaska	138.4	Nebraska	130.2	Utah	116.8
New Jersey	138.2	Ohio	130.0	Oklahoma *	115.5
Minnesota	137.3	Idaho	129.2	Arkansas	114.9
Maryland	137.0	Missouri	127.6	Tennessee *	114.4
Colorado	135.4	Maine	127.0	Alabama *	113.6
Montana	135.1	Wyoming	125.4	Georgia	110.5
California	133.8	Indiana	124.8	Nevada	106.3
Illinois	133.3	North Dakota *	124.8	Mississippi	104.5
New Hampshire	133.0	Virginia	124.2	Kansas	n/a
Rhode Island	132.5	Kentucky	123.8	South Dakota	n/a
Michigan	132.0	South Carolina *	123.0	Vermont	n/a
				U.S. Total	137.1

Compiled by Athena Partners, Kirkland, WA. Age Adjusted to 2000 Standard Population, All Races. Excludes In Situ cancers. * Indicates not all years available.
Source: *Cancer in North America: 1995-1999, Volume One: Incidence, North American Association of Central Cancer Registries (NAACCR), May, 2003.*

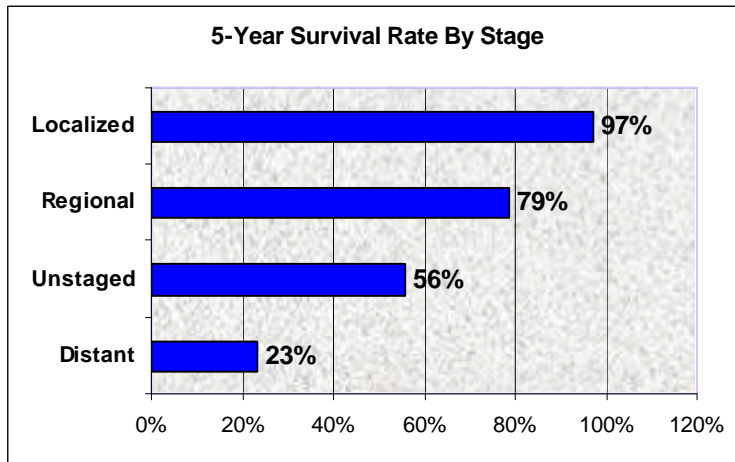
**Seattle-Puget Sound Region
Has the highest incidence of breast cancer
Among the nine NCI U.S. urban areas***
(Incidence Rate per 100,000, 1996-2000)



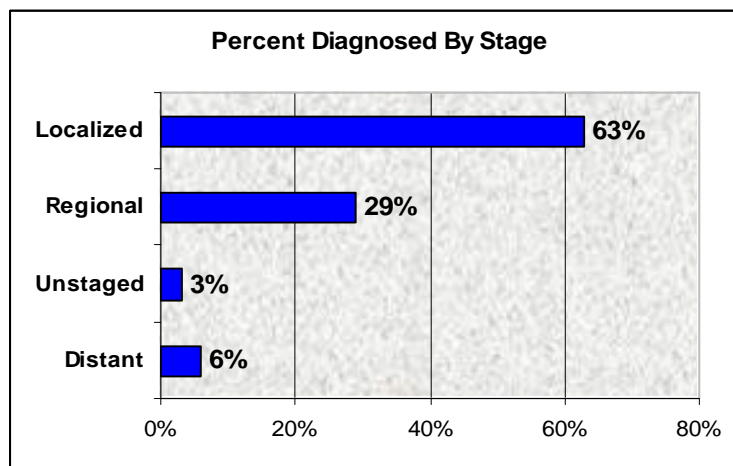
Compiled by Athena Partners, Kirkland, WA. Seattle-Puget Sound area consists of 13 counties in western Washington. Age Adjusted to 2000 Standard Population, All Races. Excludes In Situ cancers.

Source: Surveillance, Epidemiology, and End Results (SEER) Program, National Cancer Institute, April 2003

**Five-year survival rate for
Localized breast cancer is 97 percent
When diagnosed at an early (localized) stage**



**Yet, only 63 percent of breast cancers
are diagnosed at an early stage**



Compiled by Athena Partners, Kirkland, WA. Female Breast Cancer—United States, 1992-1999.

Source: National Cancer Institute, Bethesda, MD, Table IV-7, Date TBD.

Detailed Citations

Page 1

Sources:

Projected 2003 Cases: Cancer Facts and Figures, 2003, American Cancer Society, 2003, Pages 4, 5 and 6. Available at <http://www.cancer.org/downloads/STT/CAFF2003PWSecured.pdf>.

State Level Incidence: Cancer in North America: 1995-1999, Volume One: Incidence, North American Association of Central Cancer Registries (NAACCR), May, 2003, available at <http://www.naacr.org/filesystem/pdf/CINA1996-2000vone-3.pdf>

US Incidence: Surveillance, Epidemiology, and End Results (SEER) Program (www.seer.cancer.gov), SEER*Stat Database: Incidence - SEER 9 Regs Public-Use, Nov 2002 Sub (1973-2000), National Cancer Institute, DCCPS, Surveillance Research Program, Cancer Statistics Branch, released April 2003, based on the November 2002 submission. Available at http://canques.seer.cancer.gov/cgi-bin/cq_submit?dir=seer2000&db=1&rpt=TAB&sel=^0^51^1^2^0&x=SEER%20registry^0,1,2,3,4,5,6,7,8,9^Race^0,1,2&y=Statistic%20type^1,2,3&dec=4,4,4

Page 2

Source:

Surveillance, Epidemiology, and End Results (SEER) Program (www.seer.cancer.gov), SEER*Stat Database: Incidence - SEER 9 Regs Public-Use, Nov 2002 Sub (1973-2000), National Cancer Institute, DCCPS, Surveillance Research Program, Cancer Statistics Branch, released April 2003, based on the November 2002 submission. Available at http://canques.seer.cancer.gov/cgi-bin/cq_submit?dir=seer2000&db=1&rpt=TAB&sel=^0^51^1^2^0&x=SEER%20registry^0,1,2,3,4,5,6,7,8,9^Race^0,1,2&y=Statistic%20type^1,2,3&dec=4,4,4

Page 3

Source:

Female Breast Cancer—United States, 1992-1999, Survival Rate and Percent Diagnosed by Stage. Source: Ries LAG, Eisner MP, Kosary CL, Hankey BF, Miller BA, Clegg L, Mariotto A, Fay MP, Feuer EJ, Edwards BK (eds), SEER Cancer Statistics Review, 1975-2000, National Cancer Institute, Bethesda, MD, Table IV-7. Available at http://seer.cancer.gov/csr/1975_2000/results_merged/sect_04_breast.pdf